



165 Capitol Avenue
Hartford, CT 06106-1658

February 1, 2016

Jon Colavito
Project Manager
3M Traffic Safety and Security Division
3M Center
Building 225-4N-14
St. Paul, MN 55144
jcolavito@mmm.com

Re: Master Agreement 08ITZ0069MB

Dear Mr. Colavito;

We have received your request to update the Product Schedule associated with the above noted Department of Administrative Services Master Agreement. **This change adds the Collis Merchant Test Suite EMV test cards per the attached quotation for the Department of Motor Vehicles CIVLS Modernization Program.**

Given the Terms and Conditions of this agreement, the request to update the Product Schedule is approved. A copy of your Product Schedule update request is attached to this letter. Please consider the services a part of the associated Master Agreement and file this approval with the appropriate agreement for future reference.

Best regards,


Jean Del Greco
Contract Specialist
DAS Procurement Services

cc: Master Agreement File 08ITZ0069MB



February 01, 2016

Ms. Jean Del Greco
Contract Specialist
Dept. of Administrative Services
165 Capitol Avenue, 5th Floor South
Hartford, CT 06161-1658

Re: Master Agreement 08ITZ0069

Dear Ms. Del Greco:

This letter serves as a request by 3M to update the Product Schedule of Master Agreement 08ITZ0069 with the Collis Merchant Test Suite EMV test cards (Contact Only). The Collis Merchant Test Suite offers EMV testing tools for credit card terminals – essential to ensuring the solution works correctly in its target environment and is required to program credit card chip technology for processing credit card payments.

The Collis Merchant Test Suite costs \$7,200. After 3M's receipt of the State's payment of \$7,200, 3M will transfer the license for the Collis Merchant Test Suite and the first year of service, maintenance and updates to the State of Connecticut DMV.

Thank you for your consideration. If you have any questions, please feel free to contact Jon Colavito at 602-574-8100 or jcolavito@mmm.com.

Sincerely,

Jon Colavito
Project Manager
3M Traffic & Safety Division
602-574-8100 / 512-963-7420
jcolavito@mmm.com


Please see the attached price sheet.

Collis™ Merchant Test Suite

The **Collis Merchant Test Suite (MTS)** is a complete package of EMV™ test tools for terminals, PINPads and ATMs.

Not only does the Collis MTS provide you with card simulation - for both contact and contactless - but it also assists you in performing the mandatory card brand certification test cases for AmEx™, Diners Club™, Discover™, JCB™, MasterCard™, UnionPay™, Visa™ and Interac™.

The Collis MTS provides both true card simulation and full brand test execution allowing you to efficiently develop, test and certify your POS solution. Ultimately, it results in getting your solution to market sooner.

The **Collis Merchant Test Suite** consists of:

Collis Brand Test Tool (BTT)

The Collis BTT supports all major U.S. card brand contact and contactless certification test scripts, and it not only guides you through the certification process, it also tells you if each test case passed or failed. Once certification testing is complete, the Collis BTT allows you to extract all logs and files required for card brand submission.

Collis Card Simulator

The Collis Card Simulator can simulate all functions of an actual smart card. The card simulation functionality simulates the behavior of an actual EMV card without the need for the physical card to allow developers to perform ad hoc testing. Developers and testers can also alter existing simulated card profiles or create their own test specific EMV conditions.

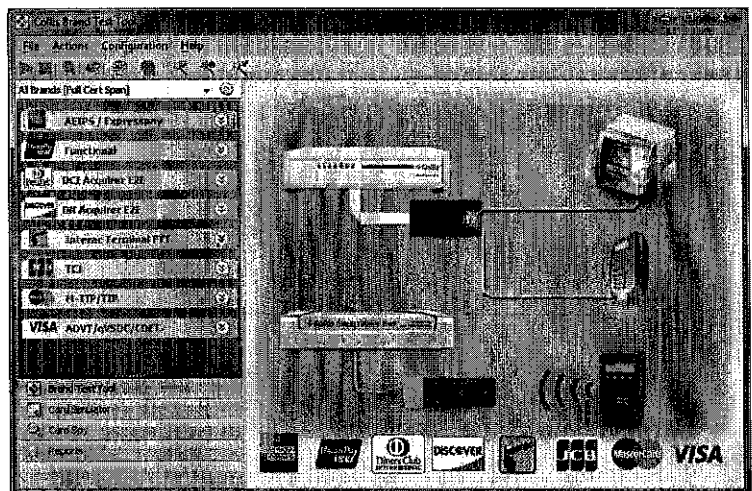
Collis Card Spy

The Collis Card Spy can inspect, **measure performance** (timing analysis) and report on the flow of data between the EMV chip (contact and contactless interfaces) and acceptance devices such as terminals and PINPads.

Collis Merchant Test Suite

Key Benefits

- ❖ Full card brand certification test case automation
- ❖ Creates logs and files for card brand certification submission
- ❖ Contact and contactless card simulation
- ❖ No more lost, blocked or damaged cards to delay testing
- ❖ Allows robust testing beyond card brand requirements
- ❖ Assists in learning and pinpointing interoperability problems
- ❖ Performance testing and benchmarking



Collis™ Test Tools

EMV™ Contact & Contactless Test Tools	Product Price*	Annual Service Fee**
Collis Merchant Suite – Contact & Contactless <ul style="list-style-type: none"> ❖ License Dongle, Software ❖ SmartLink Box, Card Probe, cables ❖ SmartWave Box, Power Supply, Card Probe, cables ❖ Support for Amex, Diners, Discover, JCB, MasterCard, UnionPay, Visa & Interac*** ❖ Mag Stripe Test Cards for Brand testing ❖ Collis Brand Test Tool – gives you the ability to execute certification test cases ❖ Collis EMV Card Simulator – gives you the ability to simulate EMV and contactless cards ❖ Collis Card Spy Application - gives you the ability to trace, capture and analyze a transaction between a device and an actual EMV or contactless physical card ❖ First year of service, maintenance and updates is included via www.collistesttools.com 	\$10,200	\$1,200
Collis Merchant Suite – Contact Only <ul style="list-style-type: none"> ❖ License Dongle, Software ❖ SmartLink Box, Card Probe, cables ❖ Support for Amex, Diners, Discover, JCB, MasterCard, UnionPay, Visa & Interac*** ❖ Mag Stripe Test Cards for Brand testing ❖ Collis Brand Test Tool – gives you the ability to execute certification test cases ❖ Collis EMV Card Simulator – gives you the ability to simulate EMV cards ❖ Collis Card Spy Application - gives you the ability to trace, capture and analyze a transaction ❖ First year of service, maintenance and updates is included via www.collistesttools.com 	\$7,200	\$750
Collis Contactless Hardware Upgrade <ul style="list-style-type: none"> ❖ SmartWave Box, Power Supply, Card Probe, cables ❖ Required to enable contactless card support for the Collis applications ❖ First year of service, maintenance and updates is included via www.collistesttools.com 	\$3,450	\$450

* All prices are in U.S. Dollars and do not include any applicable taxes

** The first year of any annual Support Fee is included in the purchase price

*** List accurate at time of publishing – UL Transaction Security, makers of Collis-brand tools, continues to develop support for other card brands.

Collis Product Service

After the first year you have the option of continuing to receive service on the products you have purchased. Below are the terms and conditions for Collis service contracts:

1. Product service gives the following services from UL-TS to the Customer:
 - New releases.
New releases of (components of) the Product will be delivered automatically. New releases will always be backward compatible unless clearly stated.
 - Collis Helpdesk.
Access to the Helpdesk of B2/UL-TS for questions and support with operational problems and with installation of new releases.
 - Hardware replacement.
In case of problems with hardware delivered by UL-TS not older than three (3) years, UL-TS will discuss the problems with the Customer. If required, UL-TS will send new hardware to the Customer (transport costs borne by UL-TS) within three business days. The Customer is asked to return the old hardware to UL-TS (transport costs are the responsibility of the Customer).
 - Bug fixing.
If the Customer discovers a bug in the software, UL-TS will investigate the issue and attempt to come up with a solution (bug fix or new release). UL-TS will keep the Customer informed.
2. The service contract will be agreed upon for a term of one (1) year between UL-TS and the Customer. The UL-TS service contract will be extended annually by one year unless Customer ends the contract before the end of the current service year (by mail, fax or by e-mail). The costs of the Service contract will be invoiced by UL-TS at the start of each service year (starting at the date of software / hardware delivery) to the Customer.
3. UL-TS is not liable for any damage that may result from the use of (the service on) the Product.

For additional information please contact B2 at 855.730.9827 or collis@b2ps.com

There is a B2 Test Card Set for all your testing needs . . .

EMV™ USA Test Card Set



Designed specifically for the U.S. market, this set of 15 test cards is ideally suited for training store support personnel, generating EMV transactions and performing demonstrations.

Note - these cards are not suitable for formal certification.

The following cards are included in the set:

1. Visa, 201 Service Code, English, PAN=476173 ***** 0010, Signature
2. Visa, 201 Service Code, English, PAN=476173 ***** 0010, Offline PIN
3. Visa, 201 Service Code, English, PAN=476173 ***** 0010, Online PIN
4. Visa, 201 Service Code, French, PAN=476173 ***** 0010, Signature
5. Visa, 201 Service Code, Spanish, PAN=476173 ***** 0010, Offline PIN
6. Visa, 601 Service Code, Spanish, PAN=476173 ***** 0010, Offline PIN
7. Visa, 201 Service Code, Empty Candidate List, PAN=476173 ***** 0010
8. Visa, 201 Service Code, Chip Error, PAN=476173 ***** 0010
9. MasterCard, 201 Service Code, English, PAN=541333 ***** 0434, No CVM
10. MasterCard, 201 Service Code, English, PAN=541333 ***** 0434, Offline PIN
11. MasterCard, 201 Service Code, English, PAN=541333 ***** 0434, Online PIN
12. MasterCard, 201 Service Code, Empty Candidate List, PAN=541333 ***** 0434
13. MasterCard, 201 Service Code, Chip Error, PAN=541333 ***** 0434
14. Interac, 220 Service Code, English, PAN=450644 ***** 1933, Offline PIN
15. Interac, 220 Service Code, French, PAN=450636 ***** 8106, Offline PIN

Dual Interface (Contactless) Test Card Set



Dual Interface (DI) – Contact & Contactless - cards provide a platform for testing, preparation for certification as well as training.

Note - these cards are not suitable for formal certification.

The following cards are included in this set:

1. Visa, Contactless, Online Only
2. MasterCard, Contactless, Online Only
3. Visa, Contactless, Online Preferred
4. MasterCard, Contactless, Online Preferred
5. Visa, Contactless, Offline Preferred
6. MasterCard, Contactless, Offline Preferred

The Collis Test Tools Order Form can be found on the next page.